



Memorial Garden Update – June 19

Greetings,

We are very excited to be able to announce that the long awaited Memorial Garden appears to finally be happening.

The Bedford Borough Council have granted us permission to create the garden at the Norse Road Crematorium.

We have already instructed a landscape designer who has produced a truly stunning design (attached to the end of the document). But, as with most beautiful things there comes a heavy price tag.

The Treasurer has been in contact with a number of contractors to get the garden built but the costs have been astronomical and out of reach.

We have now changed our plan of attack and have broken down the works and are in contact with a number of local companies to try and get the works carried out at reduced costs through their kindness and generosity.

At present there is a company that has been very charitable and offered to build the garden path for us free of charge.

Another company will be providing us, at a discounted rate, with the materials to finish the pathway.

We have managed to bring the planting (hedges, shrubs, bulbs) within budget so we don't need to worry about those items.

The only remaining item to procure is the seating requirements. We are attempting to contact a tree surgeon and see if they can assist with the "cube seating" but the curved benches remaining an item to procure. Again if anyone has any contacts or believes they know someone who might be able to assist then please put them in touch with the Treasurer at treasurer.bedfordshire@sands.org.uk

Finally, as a Committee we have come up with a simplistic statue to place in the garden,

The concept is similar to the statue at the SANDS garden at the National Arboretum (please see attached images). Instead of a statue, the idea is to have a mosaic of the SANDS logo placed on top.

This has not been confirmed so if anyone has any suggestions or ideas then please let us know and we can review and discuss the possibilities



Whilst the plans are in place nothing has been confirmed 100% so we are sending out this information and would appreciate your feedback/input and all comments are most welcome. If you can please return any comments to bedfordshire@sands.org.uk that would be greatly appreciated.

The ambition is for the works to commence in July/August and initially complete the pathway, with the planting to be completed in September/October when the weather is more favourable.

If anyone wishes to donate monies to the Memorial Garden can they please contact the Treasurer at treasurer.bedfordshire@sands.org.uk

If anyone knows of anyone who may be able to assist with the build of the Memorial Garden, by either providing labour or materials, then please contact the Treasurer at treasurer.bedfordshire@sands.org.uk

We will keep you informed on the decisions made and progress once the works commence and when the garden is complete the intention is to carry out an opening ceremony which you will all be invited to attend.

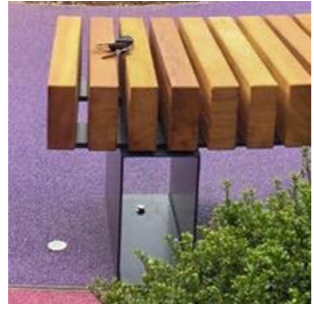
Thank you for your time and help in bringing the Memorial Garden to fruition.

Many thanks

Bedfordshire SANDS Committee



A half circle oak sleeper bench, planned smooth fixed to on metal base creates place to sit and reflect. The bench is a generous 600mm wide



Charred oak blocks moulded for seats create a soon sitting spaces, able to view the sculpture but from a different angle. Sitting areas will be enclosed by planting but not completely separate.



A tall sculpture rests in the middle of this seating area creating a focal point on the path and for visitors to sit and observe or interact with. Sculpture will sit on a low (300mm) circular, polished concrete plinth. If funds allow the SANDS Logo could be carved (shallow) into the plinth top. Sculpture to be commissioned



The path is made up of 15 circles connected with curvaceous lines, making visual reference to #Challenges15. The path takes the visitor of a journey through the gardens linking the seating spaces and creating a meditative route to walk. Made of a self binding gravel, CEDAC and edged with CEDAREGDE 150mm metal edging, edging to rise 50mm above final path level.



Main entrance to the garden is through a tall steel Moongate egded with 2m high yew hedge. Transitioning the visitor from one space to another. Two further steel Moongates instersect the path, framing different spaces and creating a sense of journey and change through the garden.

Engraved to the inside of the entry Moongate an enscription for the garden e.g. "SANDS Bedfordshire - Memorial Gardens - Dedicated 2019" the words run around the top of the Moongate so visitors will look up to the tree canopy. At eye level to both sides will be the SANDS Logo (engraved)

Tall oak posts, 150x150mm with 100x100mm wooden slats slotted one on top of another. Each slat carries the name of a major donor/donor group.



Reusse some of the cut down tree trunks as an in out divide within the planting. Trunks will be set into the ground and will eventually rot down as they decay forming good spaces for wildlife and an everchanging element to the gardens.

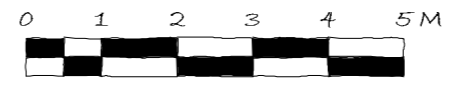
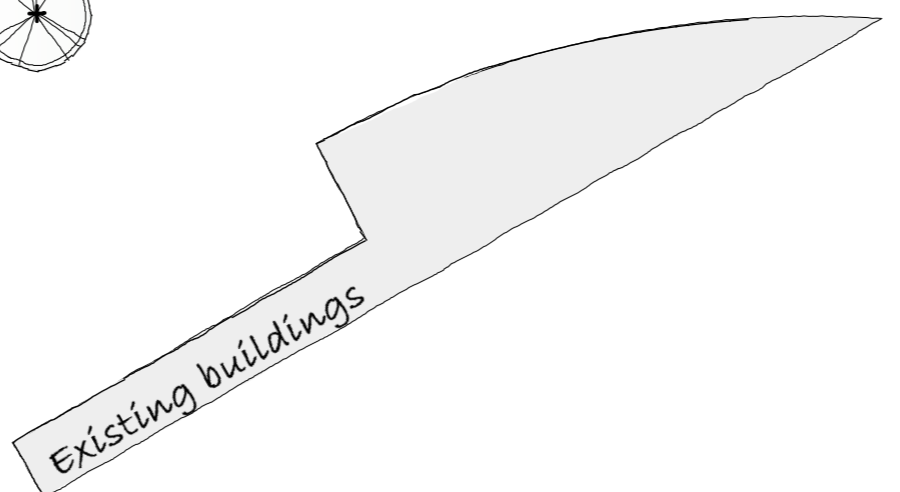
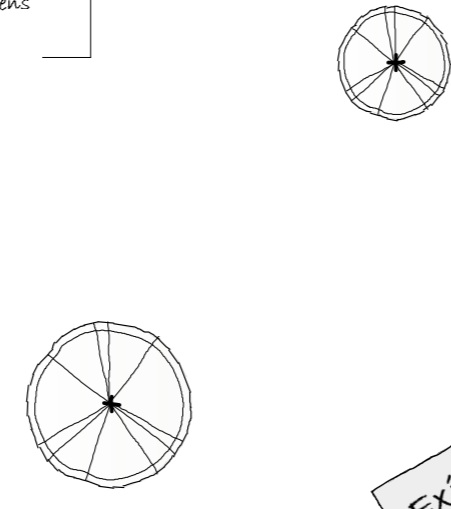


An informal bench wrapped around a tree - tree branches lifted to 2m - laving a gap between tree and bench to allow the trunk to expand as the tree grows. The tree bench will be wider on one side than the other, making it playful and a space for erpose. The tree bench is set back from the main path to give a sense of privacy and enclosure.



The planting will be divided into 4 main sections, one for each season, bringing flowering or foliage interest throughout the year. The planting will be mainly woodland plants with a limited colour palette and a strong elements of Spring bulbs giving interest from January through to June

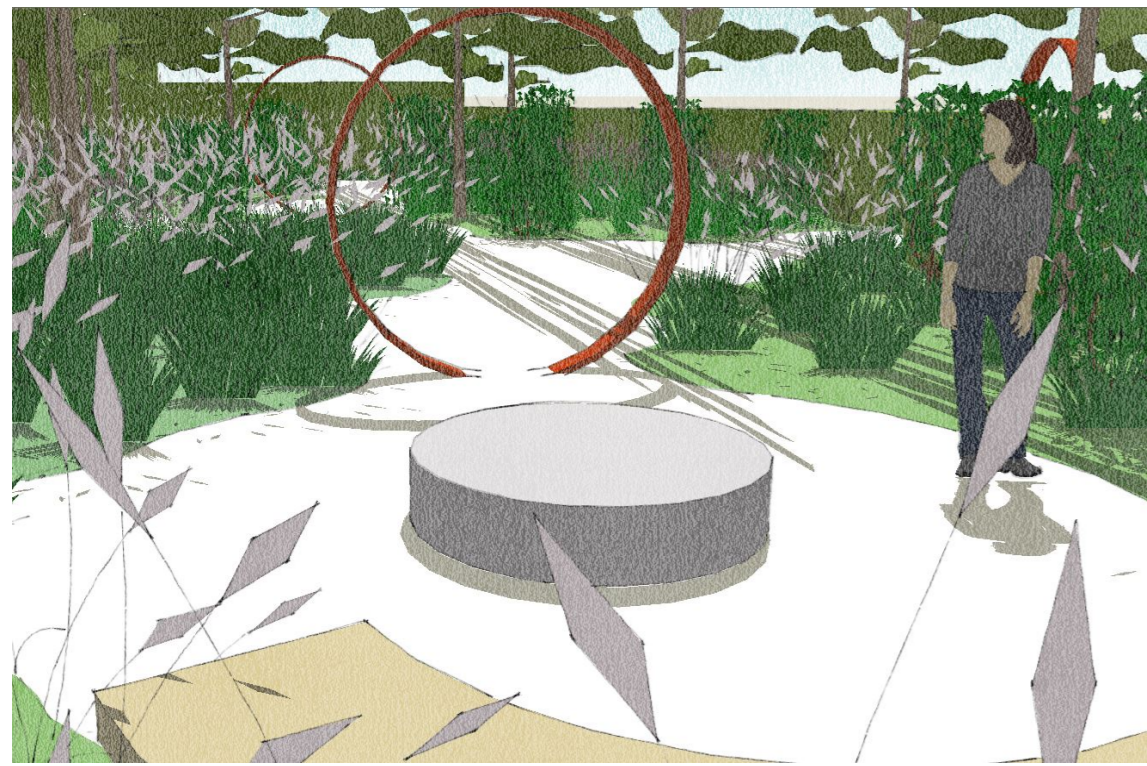
A 4th seating area with natural oak cubes which can accommodate a larger group of visitors. Set back from the main path it provide a more private contemplation space.



General Notes

- The SANDS Memorial Garden is designed to be a place of reflection and memorial for families affected by Still Birth and Neonatal death. It offers private informal spaces for sitting and for walking set within a small woodland area within the wider cemetery complex at Bedford Cemetery and crematorium.
- Entering through a tall steel Moongate - which will have a rusted finish - Marks a transition into the reflective space reserved for parents and wider family groups. The self-binding gravel path winds through 15 circles offering a route to walk through the gardens or simply to access the various seating areas through the garden. The 15 circles are a visual reference to the #challenges15 program run by the SANDS charity at a national level. Note the circles are shown in the drawing but will not in fact be detailed in the final garden. Moving along the path to the left a second Moongate frames a sculpture (to be designed) sited centrally in this circle, a wide half moon bench, planned oak sleepers on a metal frame, is the first seat in the garden.
- Entering the second sitting space, the sculpture can still be seen but the seating spaces are separated by veiled planting offering further privacy. The charred (black) oak block seats (600x600x500mm) will be fixed to the ground by heavy duty chains to prevent theft while allowing some lateral movement.
- All paths a minimum of 1.2m wide for ease of access with gradients no greater than 1:20
- Four smaller circles are bound on one side by a random tree pole 'hedge'. Made of tree poles cut to varying lengths (1m-1.5m above ground) from tree wood cut down in the area. They are set out in trees of 15 in two intersecting rows. It brings visual interest on the path and a sense of the uniqueness of each child that has been lost. Over time the poles will decay naturally and become food and homes for insect life which will populate the gardens once built.
- Set back from the main path the offset tree seat curves around the tree trunk, wide on one side enough to allow full repose for one or a group to sit under the tree together. Though visible from the main entrance it will feel secluded.
- Passing through the third Moongate into the the final seating area, Five natural Oak blocks (600x600x500m) also chained to the ground for security but with some lateral movement. Backed by a high yew hedge this space will feel most secluded within the garden.
- A high yew hedge will enclose the garden entirely bringing privacy from the public path the ther rear perimeter and some screening from the wider cemetery. Slow growing and evergreen this is a good hedging plant and will be straight forward to maintain. To the perimeter fence it will eventually stand 3m tall dropping to 1.5m at the front of the garden, this is done in waves to create isual interest and once established will be simple to clip. Horizontally the hedge will also curvaceous, giving the sense of billowing clouds, a more relaxed cut on the inner side of the hedge will create a string visual backdrop for planting. The hadge will have a clear batter from top to bottom to maintain health and vigour.
- Planting will be split roughly into fours sections one for each season, this will allow for interest year round within the gardens. A focus will be on Spring flowering bulbs that should offer something in flower from January through to June (weather permitting!). The focus will be shrubs and perennials.
- Within the planting will stand small groups of willow balls, (10-15cm diameter) handmade locally from locally grown materials (willow). Each ball will be unique and individual. Each set to remember a child. The balls will be fixed onto a slightly flexible metal rod to give some movement in the planting but also to rasie them to different levels within the planting so they can be seen - see images. The balls will not last forever (5-10 years) and will be replaced as they become too weather damaged.
- Children should be supervised at all times.
- This drawing is to be read in conjunction with all other relevant consultants drawings. Contractors to provide a suitable working environment which conforms to the current Health & Safety conditions and the Local Authority regulations.
- Rosewarne Gardens does not accept repsonsibility for accidents or damage caused in the garden.

Project: Memorial Gardens Bedford Cemetery		ROSEWARNEGARDENS	
		#7, 14 De Parys Avenue, Bedford BEDS, MK40 2TW (e) info@rosewarnegardens.com (m) +44 (0)7932 14284	
Title: Outline Plan	Scale: 1:100@A2	Date: 04/02/19	
Client: Paolo Barbarisi - Sands	Org No: RGA_159_30P_00R1	Rev No:	



1 Curved Seating back towards sculpture



2 Aerial over charred blocks



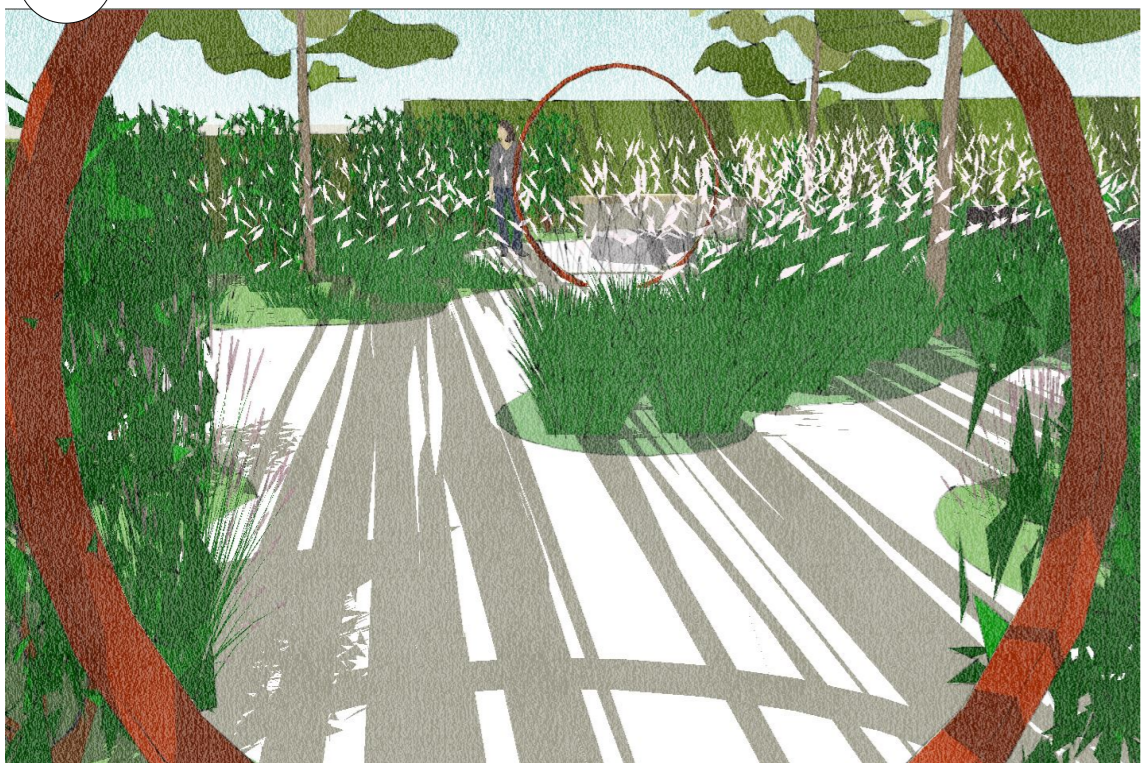
3 Tree seat and Moongate



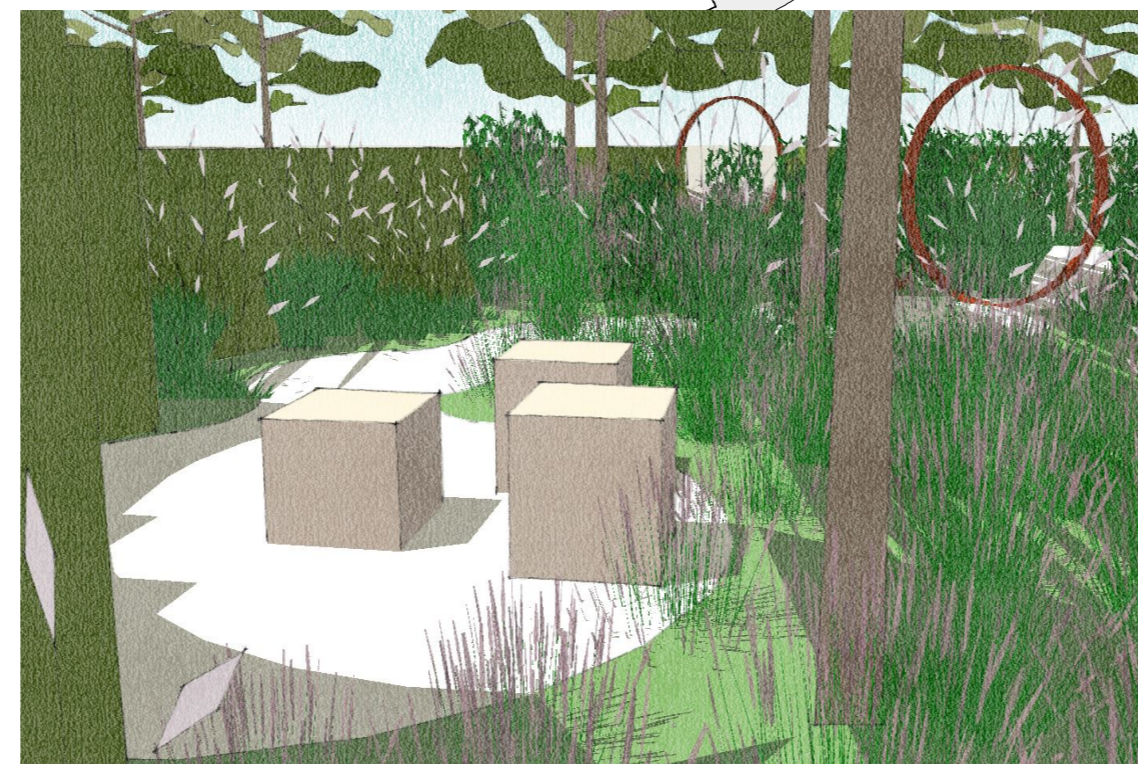
4 Moongate through to Curved Seating



5 Moongate and tree seat path



6 Moongate through to Curved Seating



7 Oak Blocks



8 Aerial Oak Blocks

Project: Memorial Gardens Bedford Cemetery		ROSEWARNEGARDENS #7, 14 De Parys Avenue, Bedford BEDS, MK40 2TW (e) info@rosewarnegardens.com (m) +44 (0)7932 142884	
Title: 3D model	Scale:	Date: 04/02/19	
Client: Paolo Barbarisi - Sands	Org No: RGA_159_3OP_003R1	Rev No:	